



*soles*

PURE MILK FROM HEVEA



**LACTAE HEVEA**

*L'excellence par nature*

*To bring you the best and due to the natural origin of LACTAE HEVEA® soles, this document contains some suggestions for implementation.*



# 1 implementation

## LACTAE HEVEA® SOLES

### ■ STORAGE

It is recommended to keep them in a dry place.

### ■ GLUING

Gluing is performed traditionally according to your protocol:

- Cleaning
- Carding *It is necessary to break the surface of the sole for better halogenation.*
- Halogenation
- Gluing

In general, due to the softness of the material, it is recommended to apply minimum pressure on the sole.

Also, for marking and displaying, set the press to roughly 2 to 3 kg.

For stitching, adjust the tension of the thread to the minimum tension.

>> See glue manufacturers' gluing recommendations:

 [Renia](#) | [Kommerling](#) | [Wakol](#)

 [HB Fuller](#) | [Labord](#) | [Keck Chimie](#)

 [Roser](#) | [Icad](#) | [Zucchini](#) | [Frabo](#)

 [Obrador](#) | [Insoco](#)

 [Lorcol](#) | [Cipade](#)

 [Worthen](#) | [Renia](#)

 [Keck Chimie](#)

 [Nanpao](#)



 [No-Tape](#)

>> Check out our video on the bonding method of our Lactae Hevea soles : [Watch video](#)

### ■ MILLING

We suggest milling the sole once fastened. Although it is a more delicate operation, it is also possible to mill it directly and to affix a welt.

>> Recommended tools: trimmer with small blades or 80 to 100-grain paper.

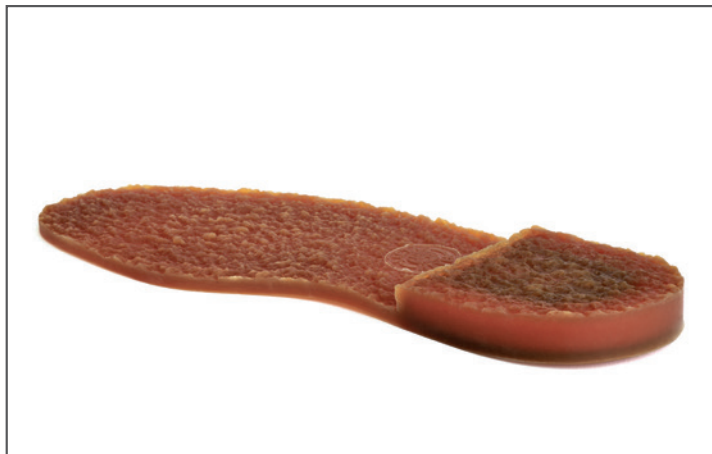
To reduce small particles which remain on the LACTAE HEVEA® sole during milling, it may be useful to dust the sole with talc.

The LACTAE HEVEA® sole is a living product and during milling, depending on the colour, a milky colour may appear, like the milk from which it originates.

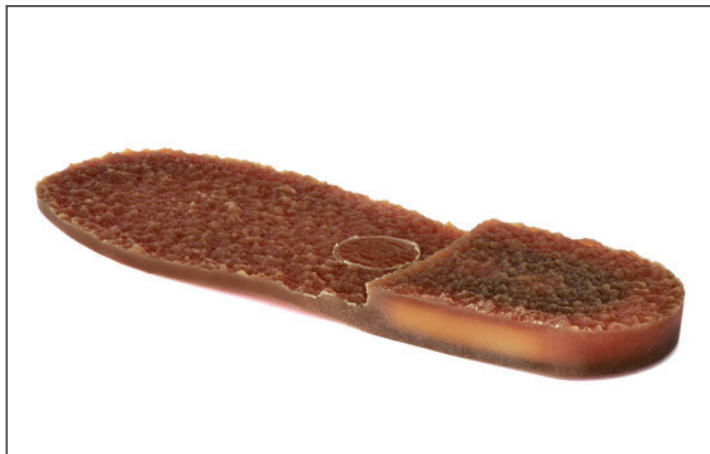
On contact with air, the surface dries naturally and its natural colour is restored, through to the centre.

These ready-to-use soles retain all of their comfort and intrinsic qualities.

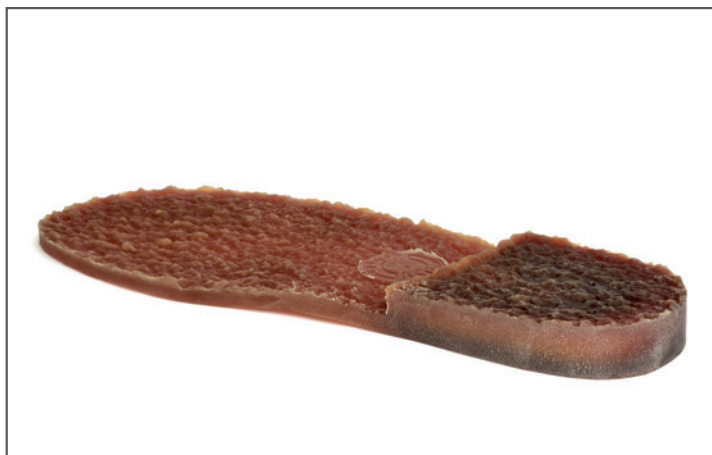
Here is an example of how the colour changes during milling.



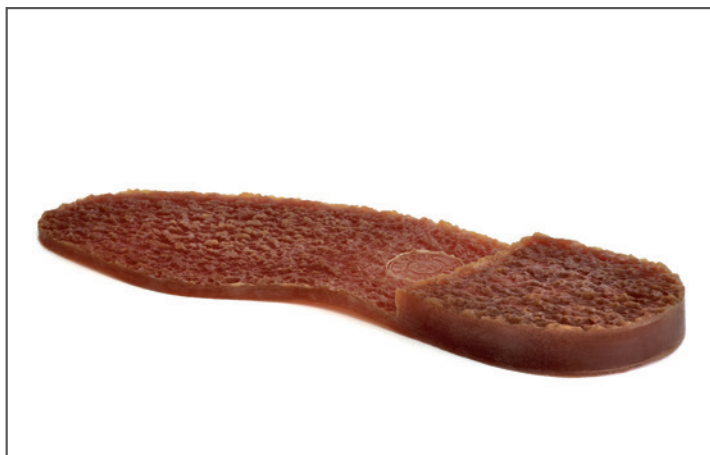
**1:** MALAISIE sole before milling



**2:** Milled once, white inside



**3:** The white fades a little



**4:** The sole, now dry, takes on its colour

## ■ FINISHING

The LH sole is made of natural ingredients and is a living product and therefore, when exposed to light or heat, may develop a light white veil, commonly known as "regrowth".

It will disappear by cleaning with water, but it may come back again.

To remove it definitively, we recommend applying a siliconised water solution (1 to 2% of neutral silicon oil) using a brush once the shoe is finished.

## ■ LASER

It is possible to engrave your own logo on our LACTAE HEVEA material. This video will give you a clear overview. This operation can't be carried out by Reltex, please contact a specialized company.



[@Youtube](#)

## ■ COLOURS

For the same colour, each production has its own shade.

This is due to the natural colour of hevea milk, which has a different influence on the desired colour each time.

On the same sole, the colour also varies depending on the thickness: the heel thus becomes slightly darker than the half sole. Furthermore, over time, the colours develop more marked shades.

The soles are delivered paired up in the same shade.

Below is an example of how colours can vary for the same production.



**5:** Colour: Orange 16



**6:** Colour: Natural 18

2

## *knowing*

### THE LACTAE HEVEA® MATERIAL



- Each sole is unique; light marks sign the personality of each one. What could be called "slight imperfections" become genuine signs of authenticity.
- LACTAE HEVEA® soles are naturally affected by contact with oily substances.
- Like all natural products, such as leather or crêpe, the usual precautions must be taken on slippery floors.

**WE ARE AT YOUR SERVICE**  
for any additional  
information.



**LACTAE HEVEA**

*L'excellence par nature*

Tel.: +33 (0)4 74 88 22 05 • Fax: +33 (0)4 74 88 22 16 • [info@lactae-hevea.com](mailto:info@lactae-hevea.com)  
320, route de Galandière • 38730 VIRIEU-SUR-BOURBRE - FRANCE

[www.lactae-hevea.com](http://www.lactae-hevea.com)